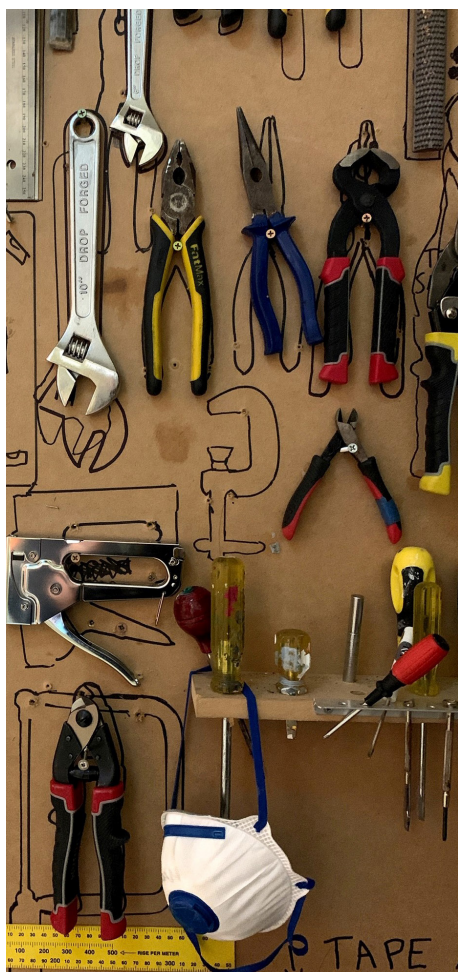


# MARCH



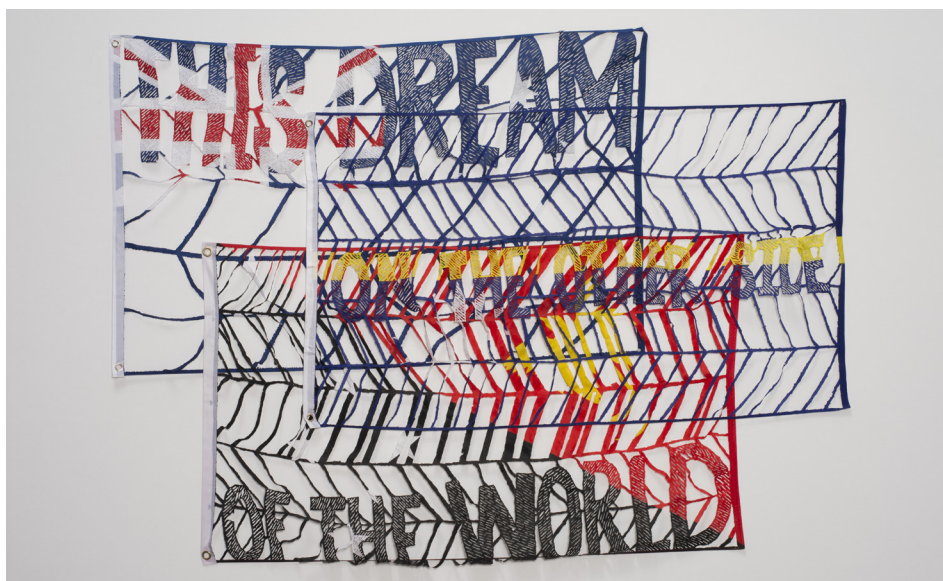
## UPCOMING EXHIBITION

As *I hope you get this*: Raquel Ormella comes to a close, we are also busy prepping for the next exhibition.

Install begins on 23 March until 3 April and we will be closing the Gallery spaces.

You can still catch a glimpse of what's coming through the windows.

Keep an eye out for our talented installers who will be drilling, sanding, painting and hanging for our next show.



## PUBLIC PROGRAMS

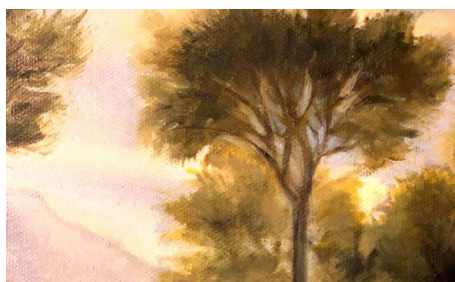
Join us on the closing weekend of *I hope you get this*: Raquel Ormella for an exciting program of artists talks and discussions.

Begin the afternoon with an artist talk in the exhibition with Raquel Ormella, followed by an in conversation discussion between Ormella and fellow ANU lecturer, Dr Chris McAuliffe.

If you're keen for more, or feel like changing things up a little, then finish off the exhibition with a panel discussion with Ormella and her contemporaries.

**Art talks: be here to listen!**

Check website for more details!



## ELEVENSES

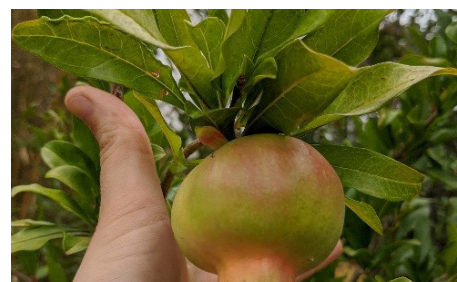
– ART & MUSIC INSIGHTS

Wednesday 11 March 11am

EDUCATION | THE JOAN'S BORLAND FOYER

Find out about exceptional masterpieces and explore the stories behind artists, composers and musicians who created famous works. Our first session kickoff with *The Milestones and Mayhem of Opera* with Dr Paul Smith, Lecturer of Music, University of New England and a guest singer.

COST | One talk \$15 | 8 talks \$96  
Bookings essential via website



## CAFE

Autumn is finally here and Cafe at Lewers is ready to embrace it!

Our new seasonal menu will be launching shortly and you can expect to see root vegetables, pomegranate, figs and pear throughout.

Staff favourites include Persian French Toast and Slow Braised Beef Rib.

For bookings please call: 4735 4265





## COLOURED STILL LIFE ACRYLIC PAINTING WORKSHOP FOR TEENS

Saturday 21 March  
1.30pm – 4.30pm

**EDUCATION | AGES 13 – 16**

Spend the afternoon in our art studios developing your painting skills.

Use acrylic paint to compose and create your own still life inspired by the distinct warm and cool colour palettes in the exhibition *Gifting: Blues, Greens and Reds*.

We will have a short break during the afternoon at Cafe at Lewers, buy or bring a snack to enjoy.

COST | \$45 per student  
Bookings essential via website



## AUTUMN TOTS CLUB

Every Friday concluding on 3 April  
10am – 11am

**EDUCATION | AGES 3 – 6**

Weekly art tours and workshops tailored for your tot.

Join us for our special weekly tot sized experiences for you and your little one.

Each week during autumn we will learn about art through stories, exhibition tours and hands – on art making in the studio.

The program will stimulate your child's imagination and creativity as they increase their recognition of shapes, colour and textures whilst developing their fine motor skills, vocabulary and fostering confidence within a beautiful gallery setting.

COST | \$12 each week  
Bookings essential via website

Adults do not pay but must stay!  
All art materials supplied.



## SHOP

Encourage and nurture your child to create beautiful art at home with their own personal touch and individuality. These inspirational packs designed by My Creative Child, have made it easy with each pack containing absolutely everything your child will need.

From ideas and inspiration, quality art materials and easy to follow guides to enable your child to uniquely create and give them the stepping stones for creative thinking.

This month we are featuring 3 beautifully packaged boxes, so why not pop into the Gallery Shop and browse *Card & Fabric Flag Collage*, *Draw & Stitch* and *Pineapple Canvas*. Sounds delicious!

To find out more contact [gALLERY@penrith.city](mailto:gALLERY@penrith.city) | Stay in the loop with our latest news, stories and special offers by following us on Facebook, Twitter and Instagram, and head to [penrithregionalgallery.com.au](http://penrithregionalgallery.com.au) to sign up for our regular newsletters.

**Penrith Regional Gallery, Home of the Lewers Bequest** | 86 River Rd Emu Plains NSW 2750 | [penrithregionalgallery.com.au](http://penrithregionalgallery.com.au)

**f** [penrithregionalgallery](https://www.facebook.com/penrithregionalgallery) **t** [@prgtlb](https://twitter.com/prgtlb) **@** [@penrithregionalgallery](https://www.instagram.com/penrithregionalgallery)

**Joan Sutherland Performing Arts Centre** | 597 High Street, Penrith NSW 2750 | [thejoan.com.au](http://thejoan.com.au)